

# **Indiana Soybean Alliance and Indiana Corn Marketing Council**

---





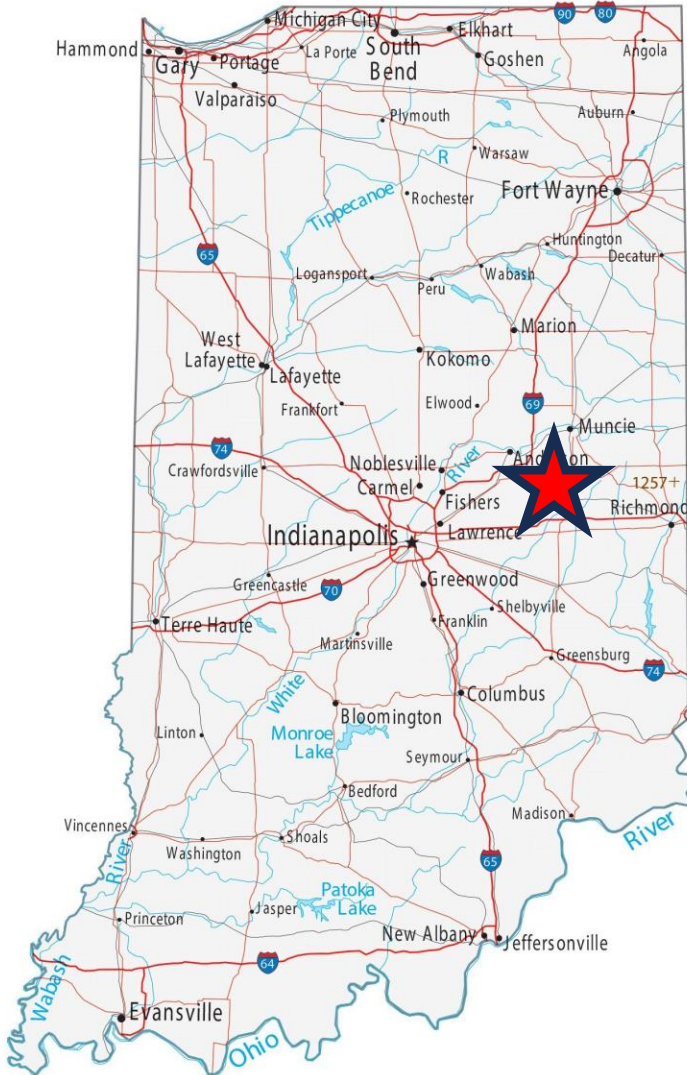
HOWELL FARMS

*Growing with Gratitude*



**INDIANA**

# Where our is farm located



- Middletown, Indiana is a small farming community in the east-central portion of the state, population 2,260
- Was founded in 1829 in Henry County, Indiana

# Community Involvement

## David

- Was recognized as a Purdue College of Agriculture Distinguished Alumni award
- Master Farmer, Purdue University and Indiana Prairie Farmers
- Certificate of Distinction for Outstanding Service to Agriculture by the Purdue Agriculture Alumni Association
- Helped found and organize the Indiana Corn Marketing Council

## Mary

- Master Farmer Purdue University and Indiana Prairie Farmer Magazine
- Certificate of Distinction for Outstanding Service to Agriculture by Purdue Agricultural Alumni Association
- Tours of the farms and welcoming of foreign trade partners +

The most **outstanding accomplishment** was the raising of their four children on the farm who were instilled with a solid work ethic, a strong faith, and love of the agricultural industry

# Howell Farms



- David and Mary Howell
- Middletown, Indiana
- Corn, soybeans, barley, tomatoes, wheat, and grass fed beef
- I farm with my sons
- 1<sup>st</sup> generation farm



# The Early Years

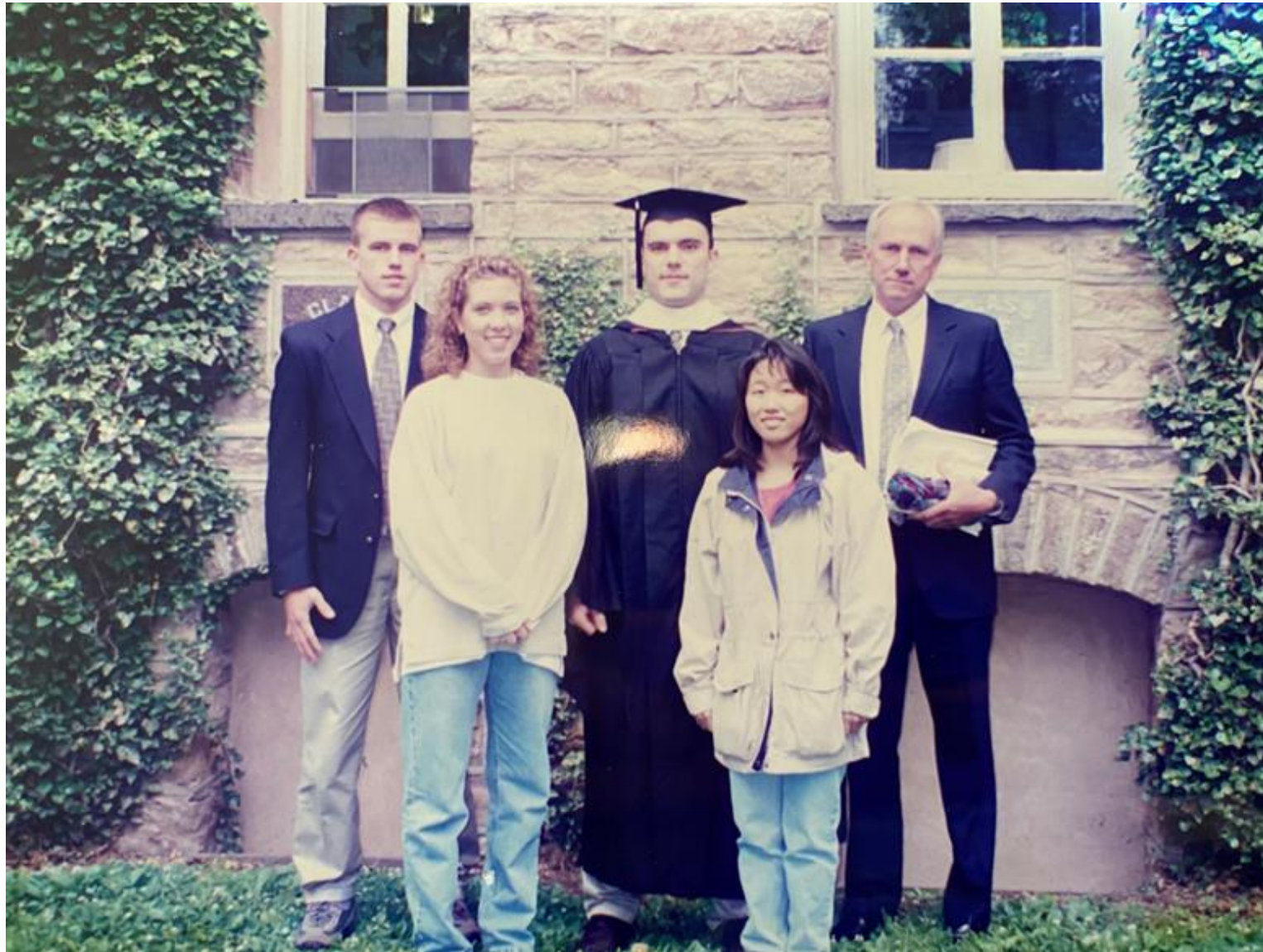


# Howell Farms – Middle Years





# Middle Years - Our Children...



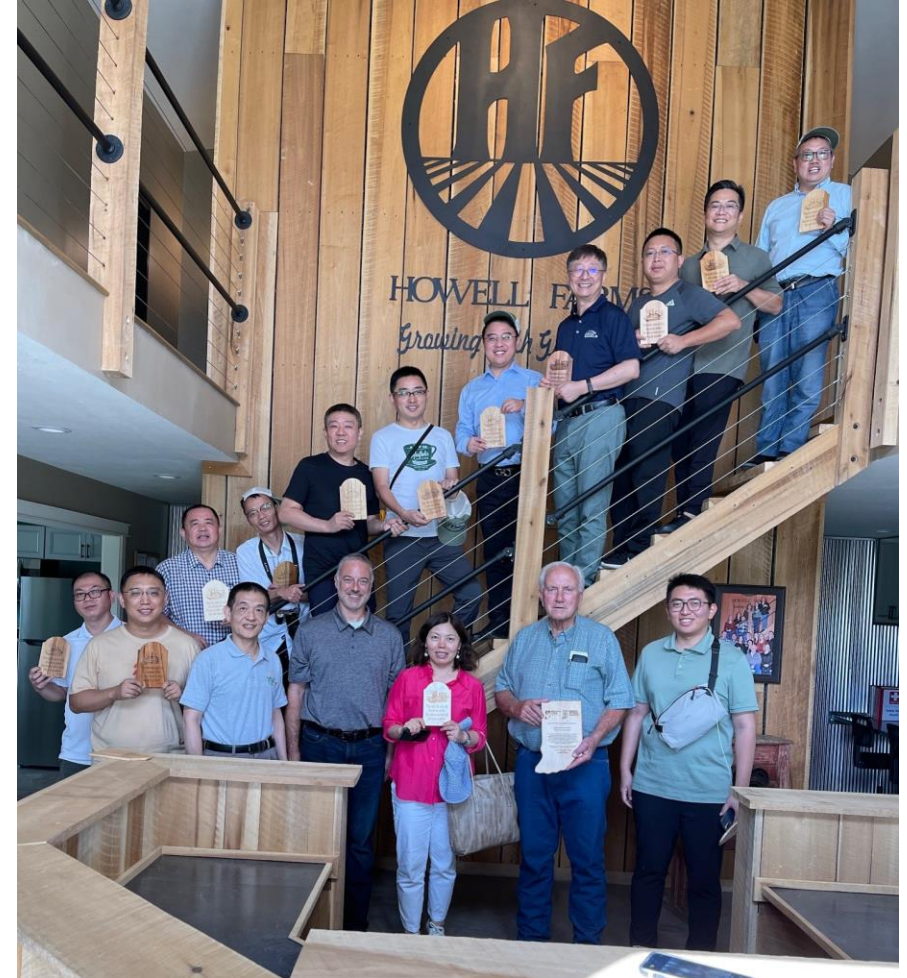
# Multiple Countries on our Farm



# 2023 Global Soy Oil Masters – 12 countries



# Multiple Countries on our Farm – USGC and USSEC



# Multiple Countries on our Farm



# 2023 Global Soy Oil Masters – 15 countries



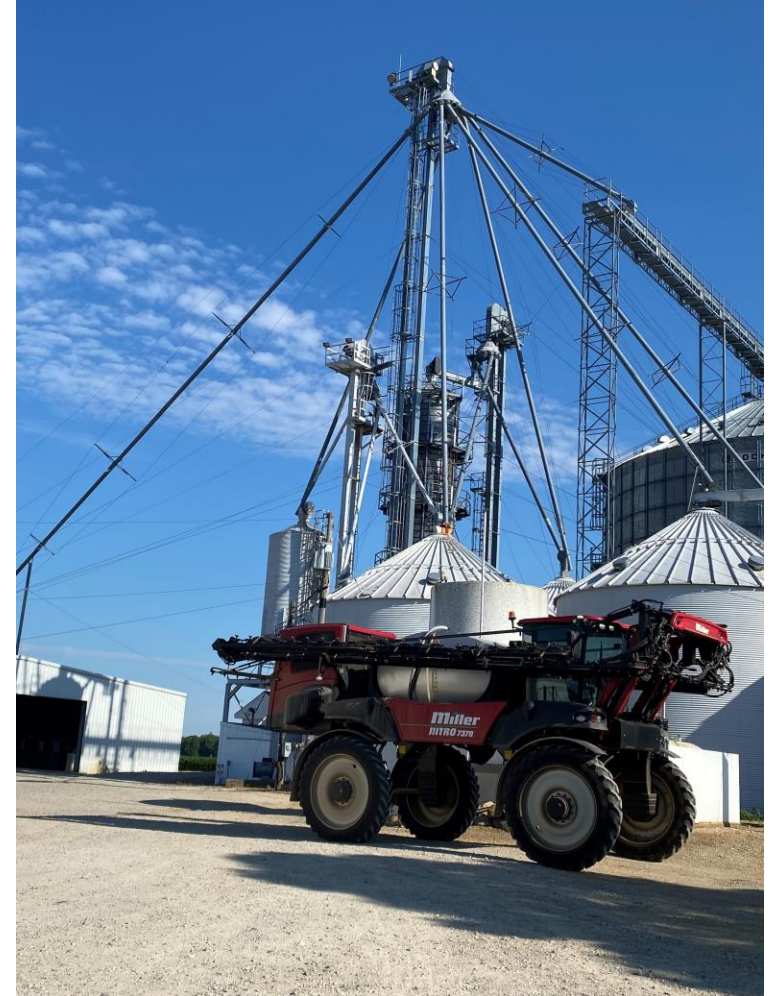


# Crops planted and emerging

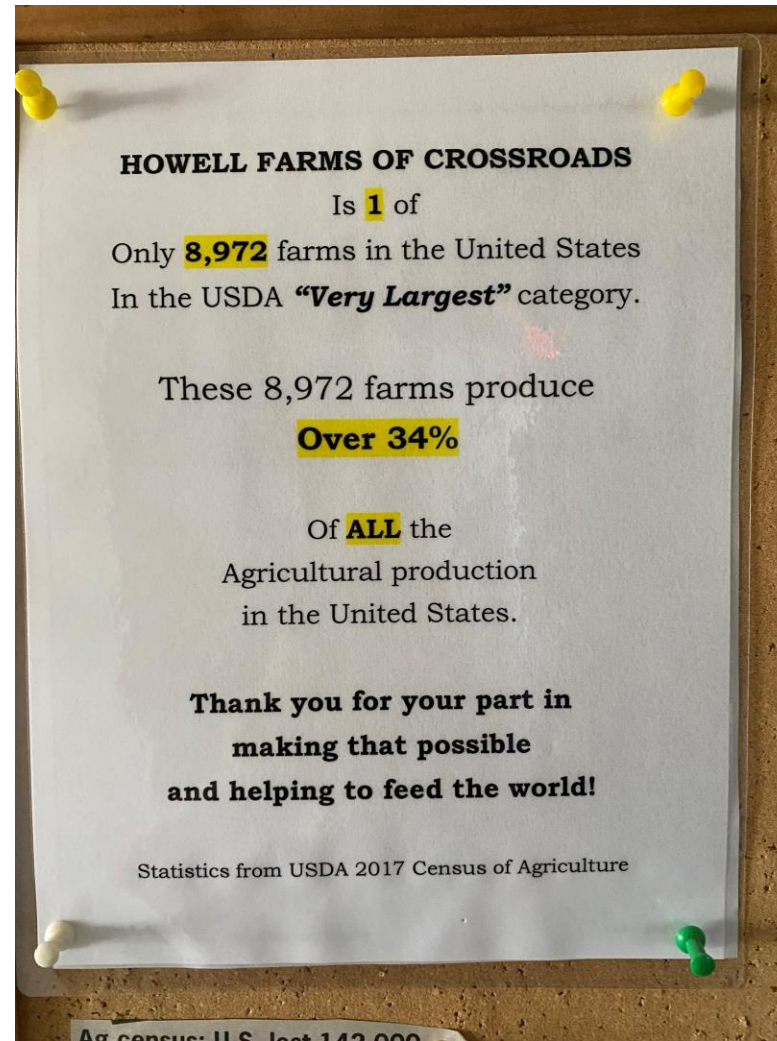




Howell Farm started small but.....



# Look at us now!





HOWELL FARMS

*Growing with Gratitude*